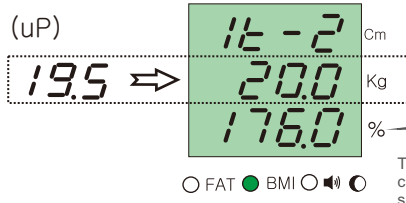
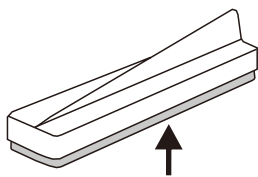
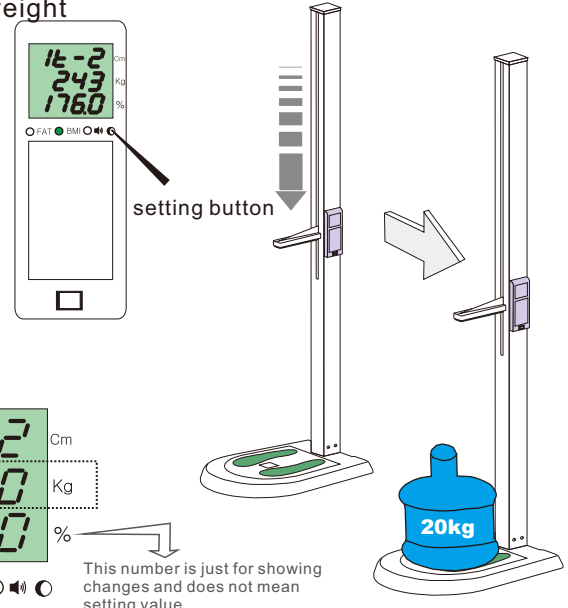


# Weight Value Correction

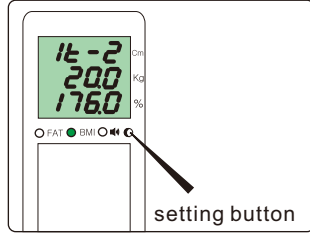
when measured weight value is **lower** than real weight

1. Push the setting button for 10 seconds by using a pin. Then the touch-bar will go down and stop at the level of the display.
2. Put a weight or an object of which weight you've already known. (ex. 20kg)
3. Push (or keep pushing) the touch plate until exact weight displayed



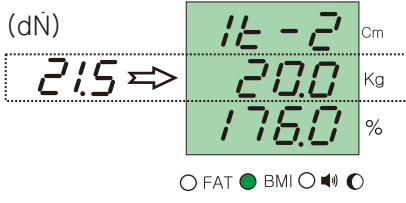
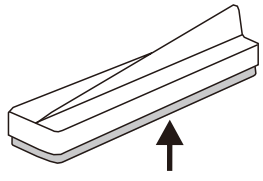
This number is just for showing changes and does not mean setting value.

4. Push the setting button for 3 seconds to finish correction.



when measured weight is **higher** than real weight

1. Push the setting button for 10 seconds.
2. Put a weight or an object of which weight you've already known. (ex. 20kg)
3. Push the setting button one more time to select "DOWN" from "UP"



This number is just for showing changes and does not mean setting value.

4. Push (or keep pushing) the touch plate until exact weight displayed
5. Push the setting button for 3 seconds to finish correction.

